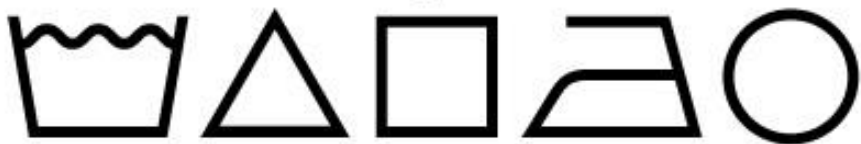


# User Guide



V. 20.0316

# SPB



**WWW.TEXLABEL.EU**



[www.texlabel.eu](http://www.texlabel.eu)

[info@texlabel.eu](mailto:info@texlabel.eu)

+39 0444 287002

# Summary

OVERVIEW .....	3
INSTALLING PRINTER.....	5
INSTALLING DRIVER FOR WINDOWS USERS .....	5
INSTALLING CUTTER / STACKER (Optional).....	6
LOADING RIBBONS AND FOILS.....	8
LOADING LABELS ON CONTINUOUS MODULE.....	12
HOW TO USE Cablabel S3 Lite SOFTWARE .....	13
MAINTENANCE.....	21
CLEAR ERROR MESSAGES.....	22
PARAMETERS FOR WHITE AND COLORED STICKERS .....	24
PARAMETERS FOR TRANSPARENT STICKERS .....	26
PARAMETERS FOR COMPOSITION LABELS.....	28
PRINCIPAL REQUIREMENTS FOR INTERNATIONAL CARE LABELS .....	33



# OVERVIEW

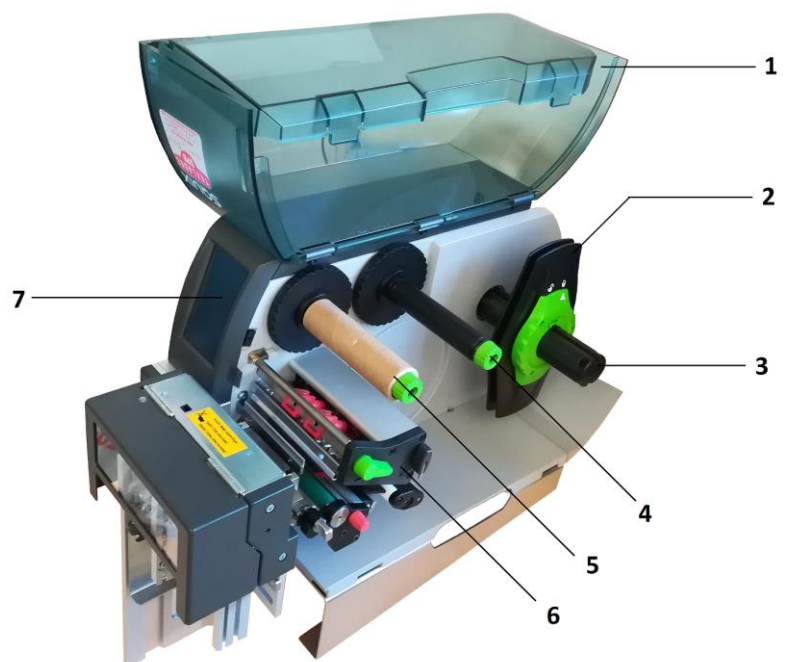
Please keep the original packaging in case the printer must be returned.

## Box Content:

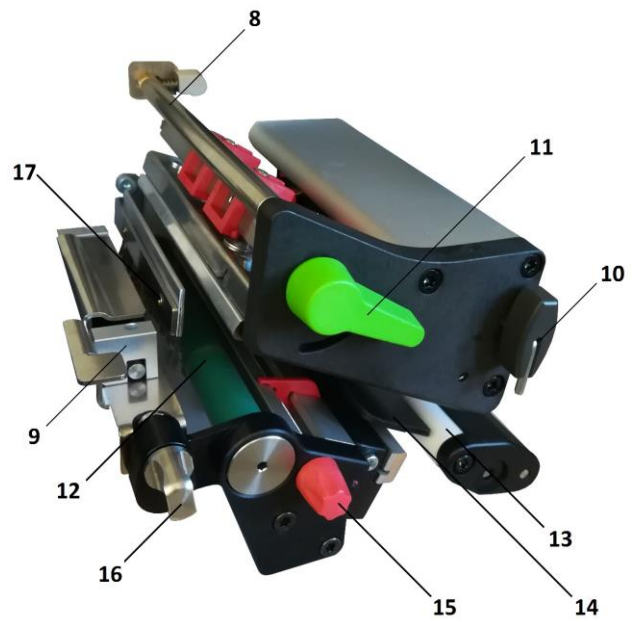
- SPA Printer
- DVD including software and printer driver for Windows
- One empty cylinder core for rewinding the foil
- USB Cable
- AC Adapter
- Power Adapter

## Printer View:

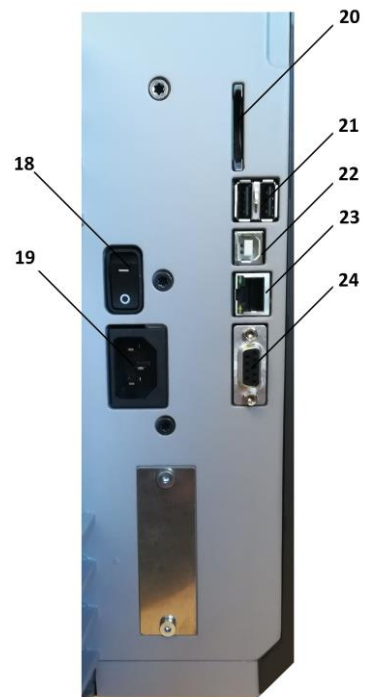
1. Cover
2. Ribbon regulator tabs
3. Ribbon supply wheel
4. Foil supply wheel
5. Foil rewind wheel
6. Print mechanism
7. Touchscreen Display



- 8. Foil guide roll
- 9. Pressure wheel
- 10. Extractable allen key for regulating
- 11. printhead lever secure
- 12. Advancement wheel
- 13. Ribbon guide roll
- 14. Photoelectric label barrier
- 15. Ribbon lateral guide regulator
- 16. Pressure wheel pin lock
- 17. Anti-static brush



- 18. ON/OFF Switch
- 19. AC Power Port
- 20. Slot for SD Memory Card
- 21. USB Port
- 22. Usb 2.0 port pc connection
- 23. Ethernet 10/100 base-t
- 24. Serial interface RS-232C



## INSTALLING PRINTER

1. Place printer onto flat and regular surface
2. Make sure ON/OFF switch is set to OFF
3. Install the cutter / stacker (See page 6)
4. Connect printer to the computer with USB cable or Ethernet cable
5. Connect AC cable to the AC Power port on the back of the printer, and then connect the Power Adapter to a grounded socket
6. Install drivers (link below)
7. The printer will run a test upon power up. If connected properly, the display should show the writing "Ready".

## INSTALLING DRIVER FOR WINDOWS USERS

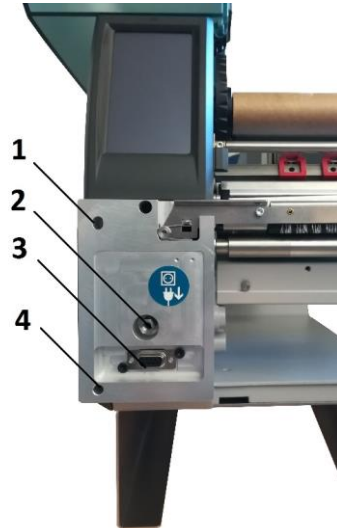
1. Option 1.
  - a. Connect to the following link for instructions on how to download the Windows driver for the printer  
[www.texlabel.eu/wp/download-it](http://www.texlabel.eu/wp/download-it)
2. Option 2.
  - a. Turn on printer and wait for the writing "Ready" to appear on the display
  - b. Run DVD as an administrator and follow the printer setup wizard

### Installing Software

1. Insert the DVD in the computer.
2. Choose "Software" on the Welcome screen.
3. Press the icon "install software" to start the installation.

## INSTALLING CUTTER / STACKER (Optional)

- 1) Cutter inert port
- 2) Cutter anchor fastening point
- 3) Cutter data connector
- 4) Cutter inert port



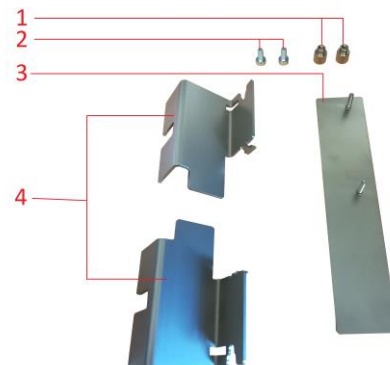
### **WARNING!!! RISK OF BEING CUT**

**PROCEED WITH THE PROCESS WITH THE AC CORD DISCONNECTED FROM THE PRINTER**

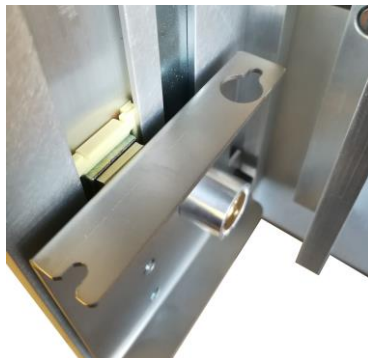
Place the cutter onto the frontal part of the printer, making sure to align the cutter outputs with the cutter inert ports. By doing so, also aligns the cutter data connector. After this task is complete, fasten the screw of the cutter onto the cutter anchor fastening point.

### LATERAL GUARDS FOR CUTTER AND STACKER PLATE (OPTIONAL)

- 1) Fastening plate bolts
- 2) Lateral guards screws
- 3) Stacker plate
- 4) Lateral guards

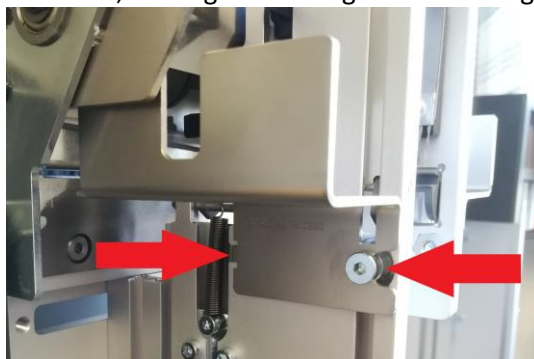


Place the stacker plate onto the cutter stacker track, inserting the fastening plate bolts into the assigned holes. Fasten and secure the plate.



**WARNING!!! RISK OF BEING CUT**  
**PROCEED WITH THE PROCESS WITH THE AC CORD DISCONNECTED FROM THE PRINTER**

Install the lateral guards as shown below, making sure to align the fastening points indicated by the arrows.



The lateral guards are both different from one another, one is for the left side and one is for the right side.

Be careful in positioning the guards.

In case of difficulty with these processes, contact **TEXLABEL** technical support.

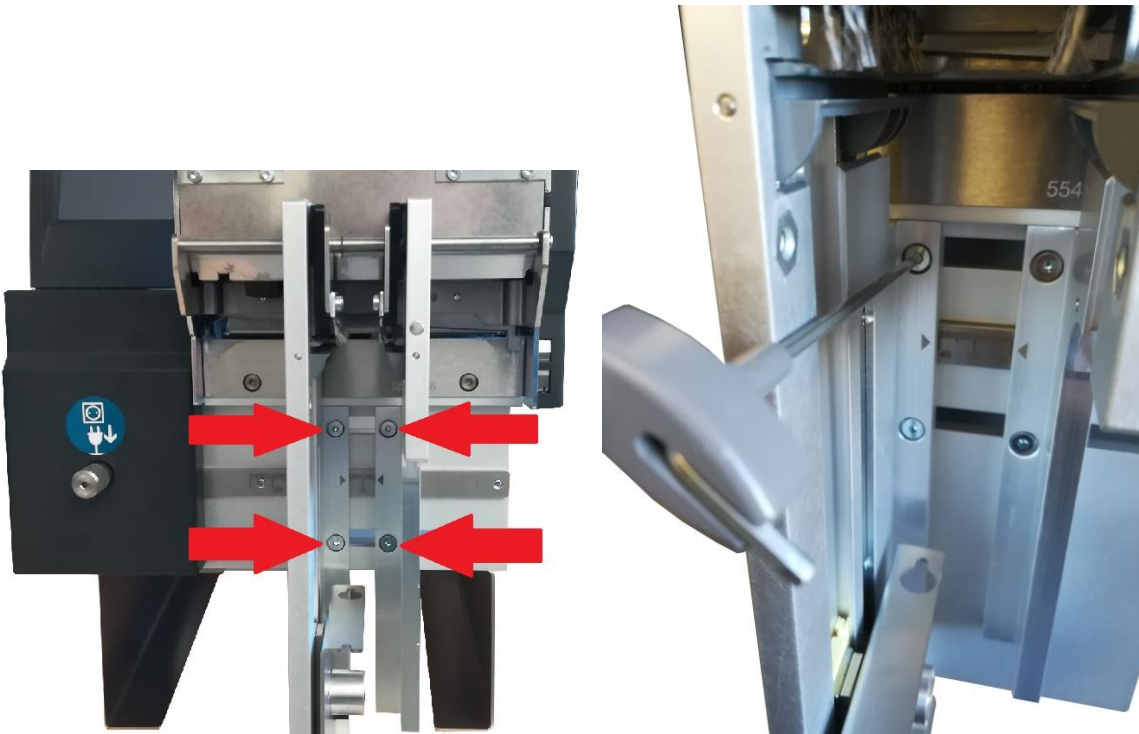
Once the lateral guards and stacker is installed, the cutter will look as so:



## REGULATE THE WIDTH OF THE STACKER

Adapting the width of the stacker, based on the ribbon width.

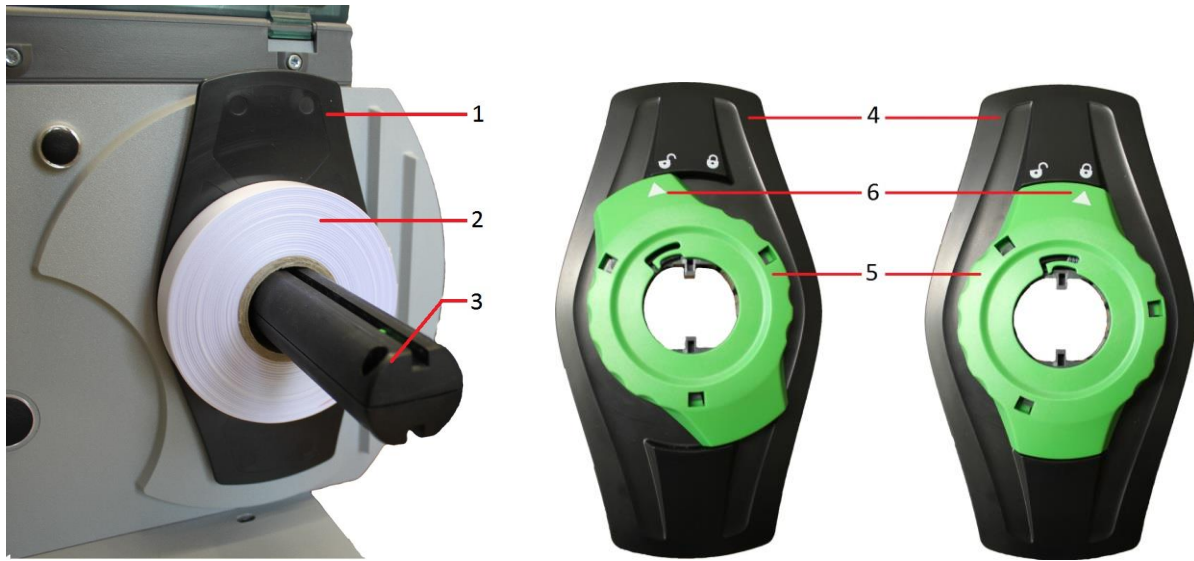
By loosening (using the allen key for regulating) the 4 screws indicated in the picture below, allows to slide the lateral guards of the stacker to increase or decrease the width needed. To lock the width at a determined width, use the measurement ruler placed between the bolts as a guide.





# LOADING RIBBONS AND FOILS

## LOADING RIBBONS



Rotate the regulator tab ring (5) counter-clockwise, so the arrow (6) is aligned with unlock symbol. In this way loosening the regulator tab (4).

Remove the regulator tab (4) from the ribbon supply holder (3).

Insert the ribbon (2) onto the ribbon supply holder (3), so that the ribbon unwinds clockwise.

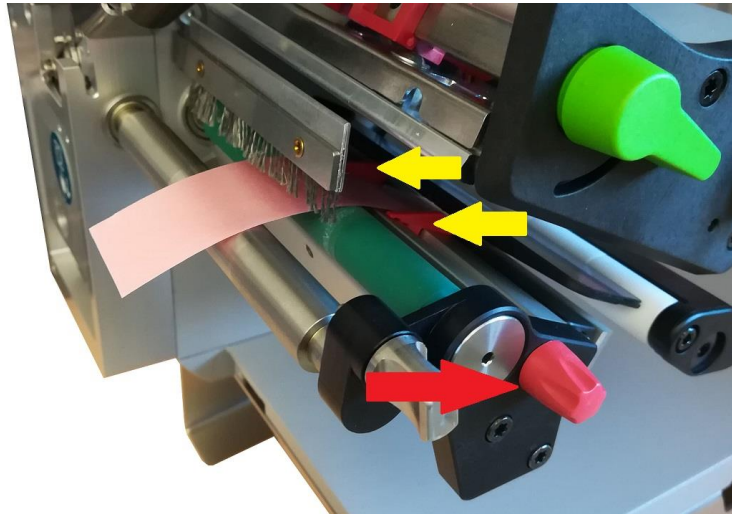
Insert the regulator tab (4) onto the ribbon supply holder (3) and slide down until the two regulator tabs (1 and 4) keep the ribbon (2) in place.

Rotate the regulator tab ring (5) clockwise, so the arrow (6) is aligned with the lock symbol. By doing so, the regulator tab will fasten onto the ribbon supply holder.

Make sure the printhead is raised and that the pressure wheel is raised.  
Increase the lateral guides of the ribbon using the lateral guide regulator.  
Pass the ribbon through the print mechanism as shown below.

Once the ribbon is installed and guided through the print mechanisms, proceed with regulating the lateral guides of the ribbon.

To regulate the lateral guides of the ribbon, use the lateral guide regulator indicated by the red arrow. By rotating the regulator clockwise, the lateral ribbon guides (yellow arrows) will close, and counter-clockwise will open them.



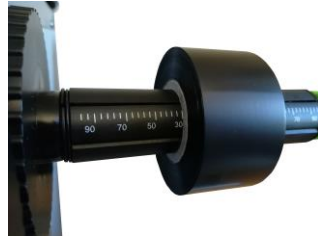
The lateral guides need to be regulated based on the width of the ribbon being used.  
If the guides are too tight, a “belly” will form on the ribbon that will cause a bad quality of print and will probably jam the printer.  
If the guides are too wide, the ribbon will move during the printing process.

## LOADING FOIL

Make sure the printheads are raised.

Insert the foil onto the upper foil supply wheel, making sure that the matte side is facing down in a way to make contact with ribbon to be printed on.

Position the foil at the center of the wheel using the ruler as a guide.

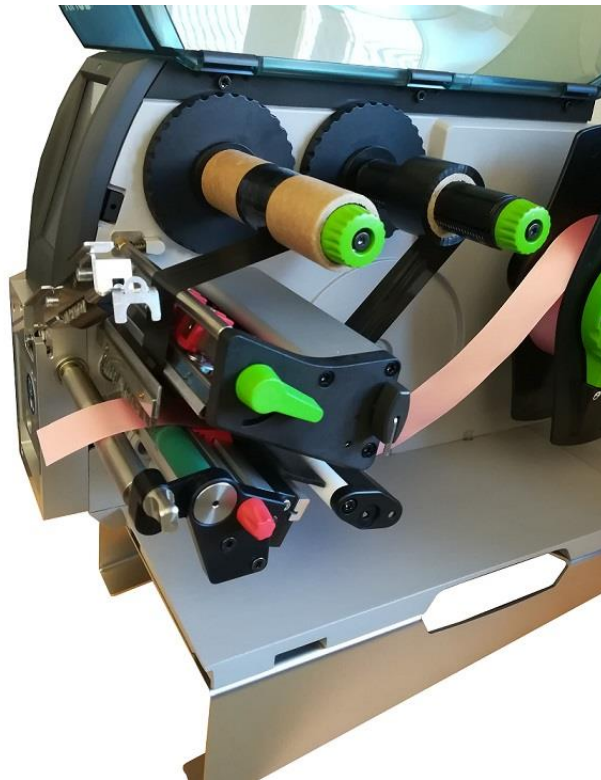


Once positioned, rotate the green locking ring on the extremity of the wheel counter-clockwise until the foil is locked in place.

Place an empty cylinder core onto the upper foil rewind wheel and lock it into place using the green locking ring on the extremity of the wheel.

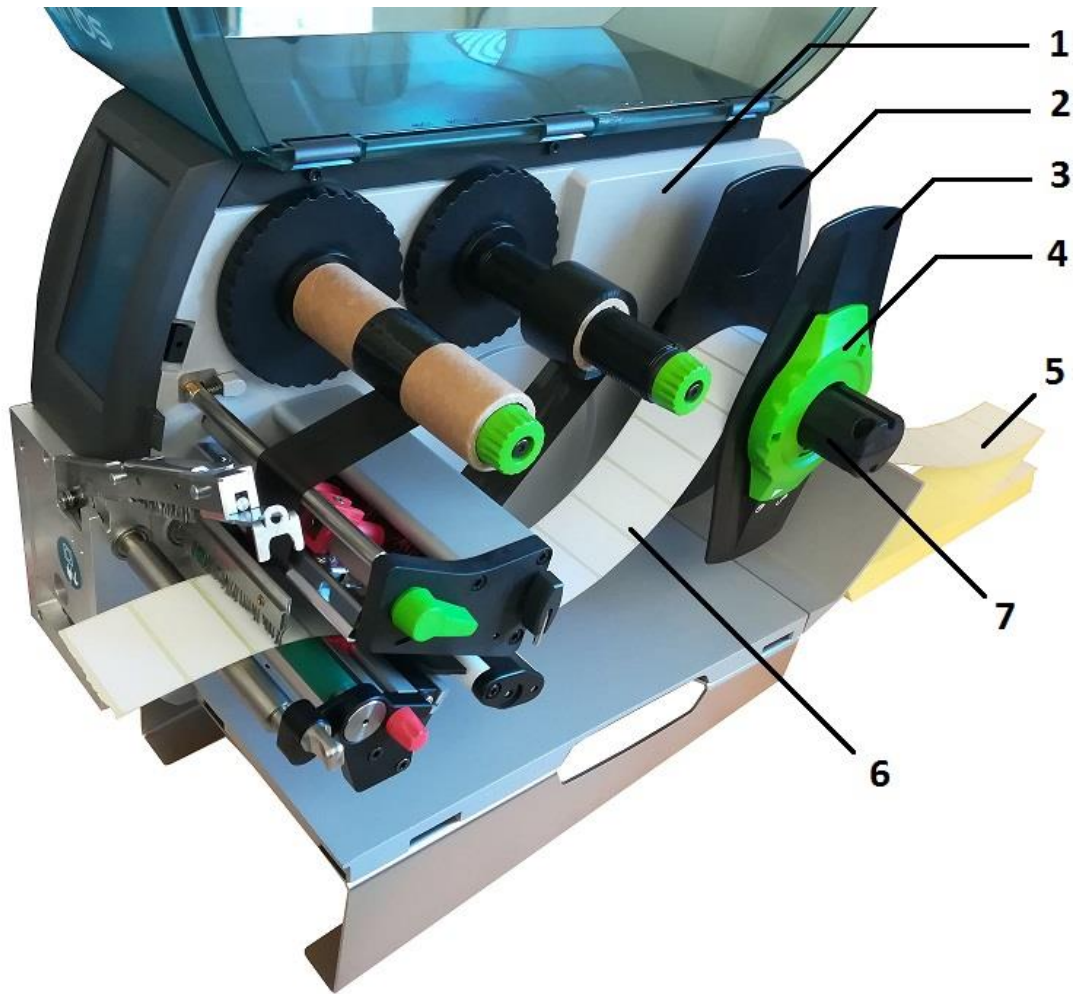
Guide the foil film through the printing mechanism as shown in the image below.

Attach the foil film extremity to the center of the empty cylinder core, using a sticker (usually found on the foil seal).



Once the foil is attached to the foil rewind wheel, rotate the rewind wheel until reaching the beginning of the ink strip and maintain the foil in tension.

## LOADING LABELS ON CONTINUOUS MODULE



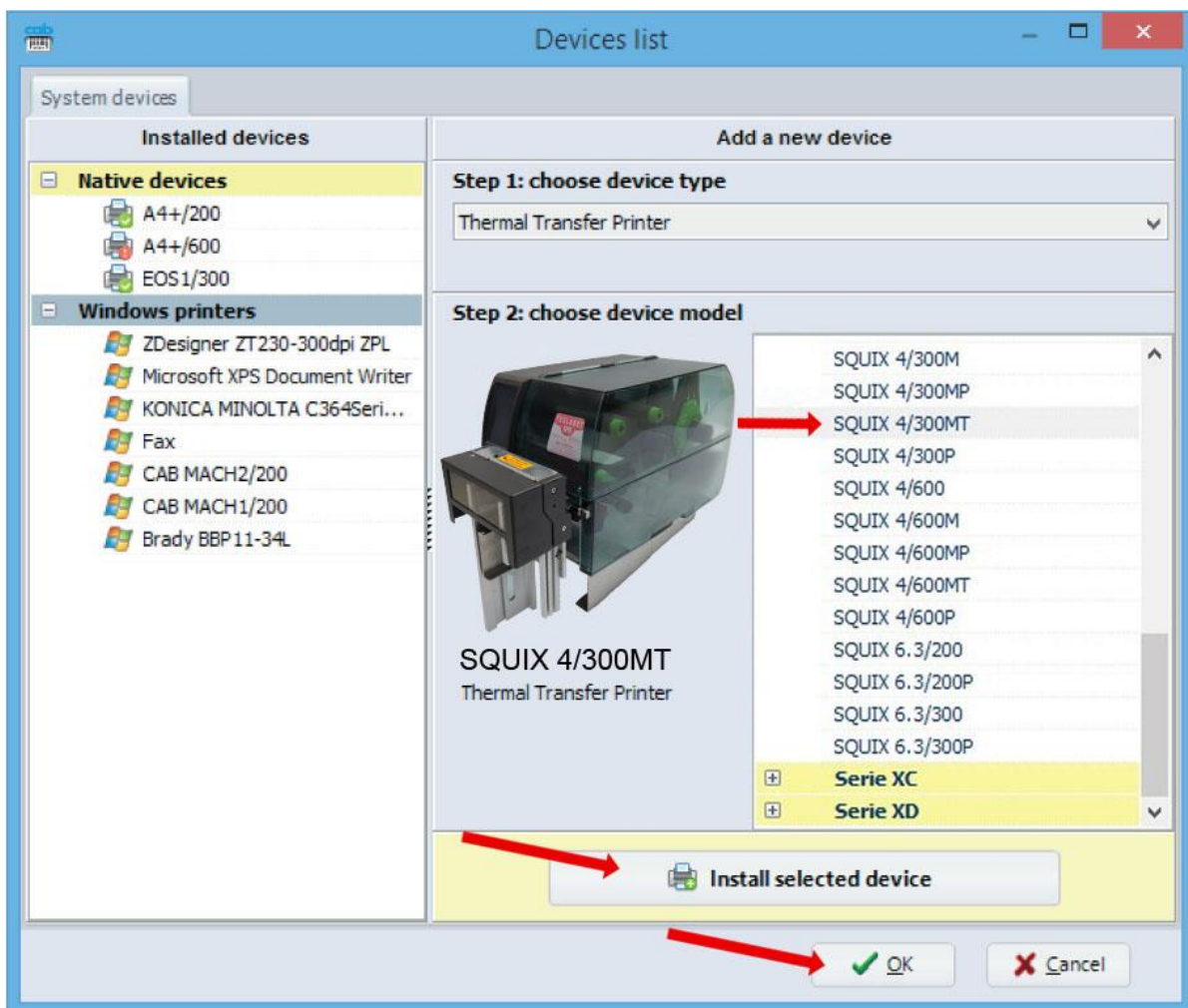
1. Position the label pack behind the printer (5).
2. Rotate the regulator ring (4) counter-clockwise, so that the white arrow is aligned with the unlock symbol. In this way loosening the regulator tab (3). Leave the regulator tab onto the supply ribbon holder (7).
3. Push the internal regulator tab (2) towards the case (1) until it is in place. At the same time, push the external regulator tab towards the outside.
4. Guide the labels (6) through the regulator tabs (6) passing over the ribbon supply wheel (7). Make sure the material to be printed on, is facing up.
5. Push the external regulator (3) until the two regulators (2, 3) leave no space for the labels to move, without blocking or bending the labels.
6. Rotate the regulator ring (4) clockwise, so that the white arrow is aligned with the lock symbol. By doing so, the regulator tab will fasten onto the ribbon supply holder (3).
7. Pass the labels through the printhead.
8. Regulate the photoelectric barrier of the labels.

# HOW TO USE Cablabel S3 Lite SOFTWARE

Click on the tab “devices”



In the list of devices, select the printer “SQUIX 4/300MT”, click on “Install selected device”, and then click on the “OK” button.





Click on “New label” to open a new project

### Create new layout

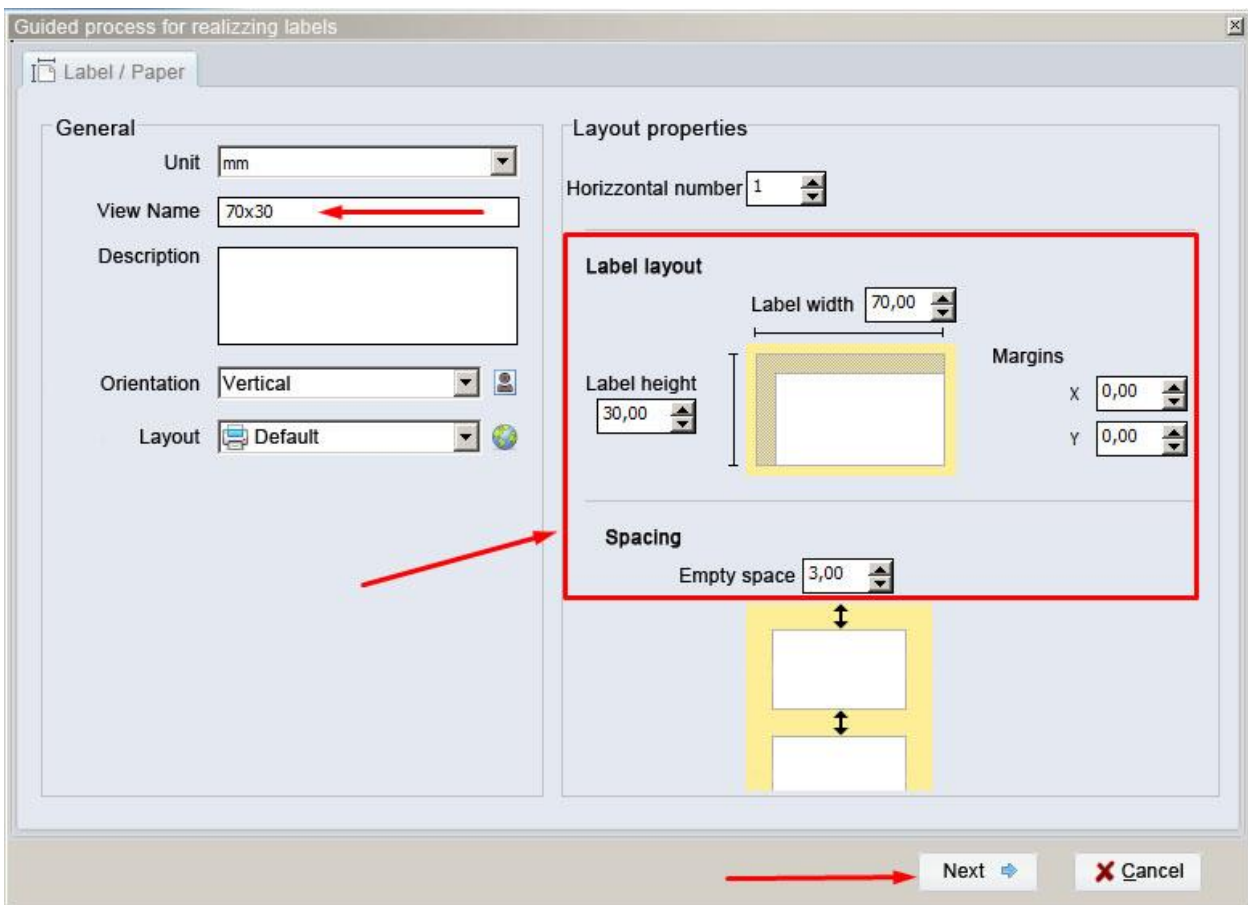


In the window that appears, select the text box “View Name” and insert the name of the format you want to create

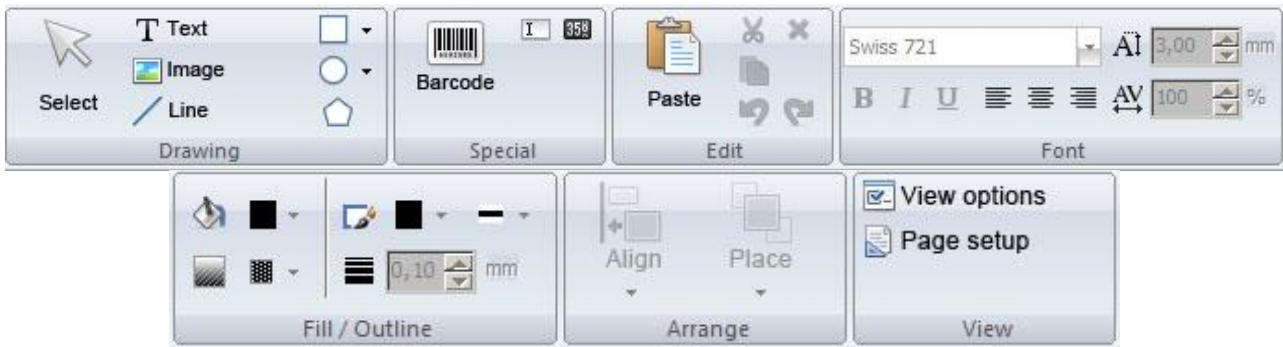
In “label layout”, set the size of the label

In “spacing”, set the value in mm of the space between one label and another

Click the button “Next” to confirm and proceed to the creation of the label



To edit the label, use the tool bar located above (as shown in image below)

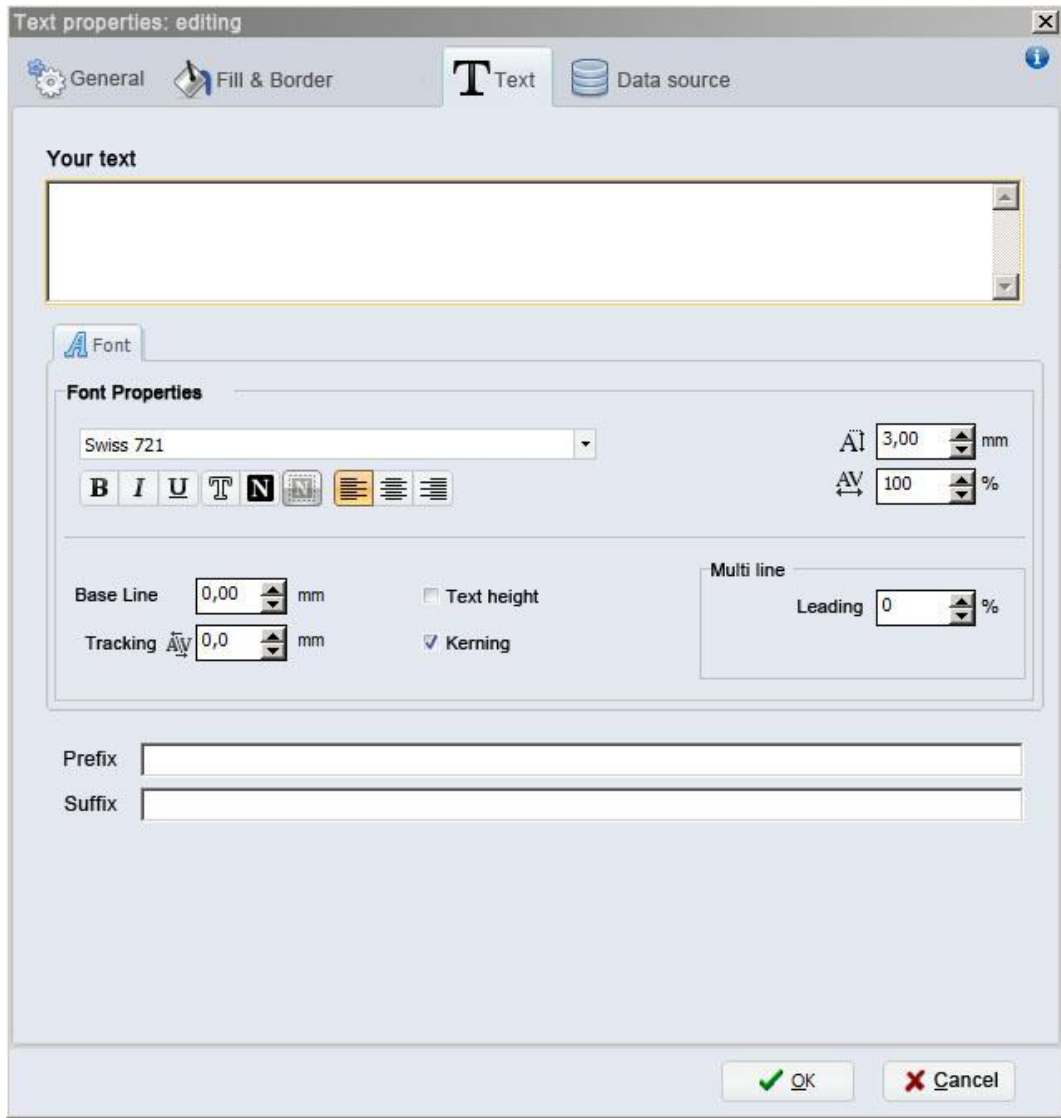


To use a tool, simply click on it and then click on the center of the label.

The tool "Text" is used to insert a text box onto the label



By clicking on the blank label, after selecting the "Text" tool, the following window will open:



From this window, it is possible to insert the text and format it using the “Font properties”

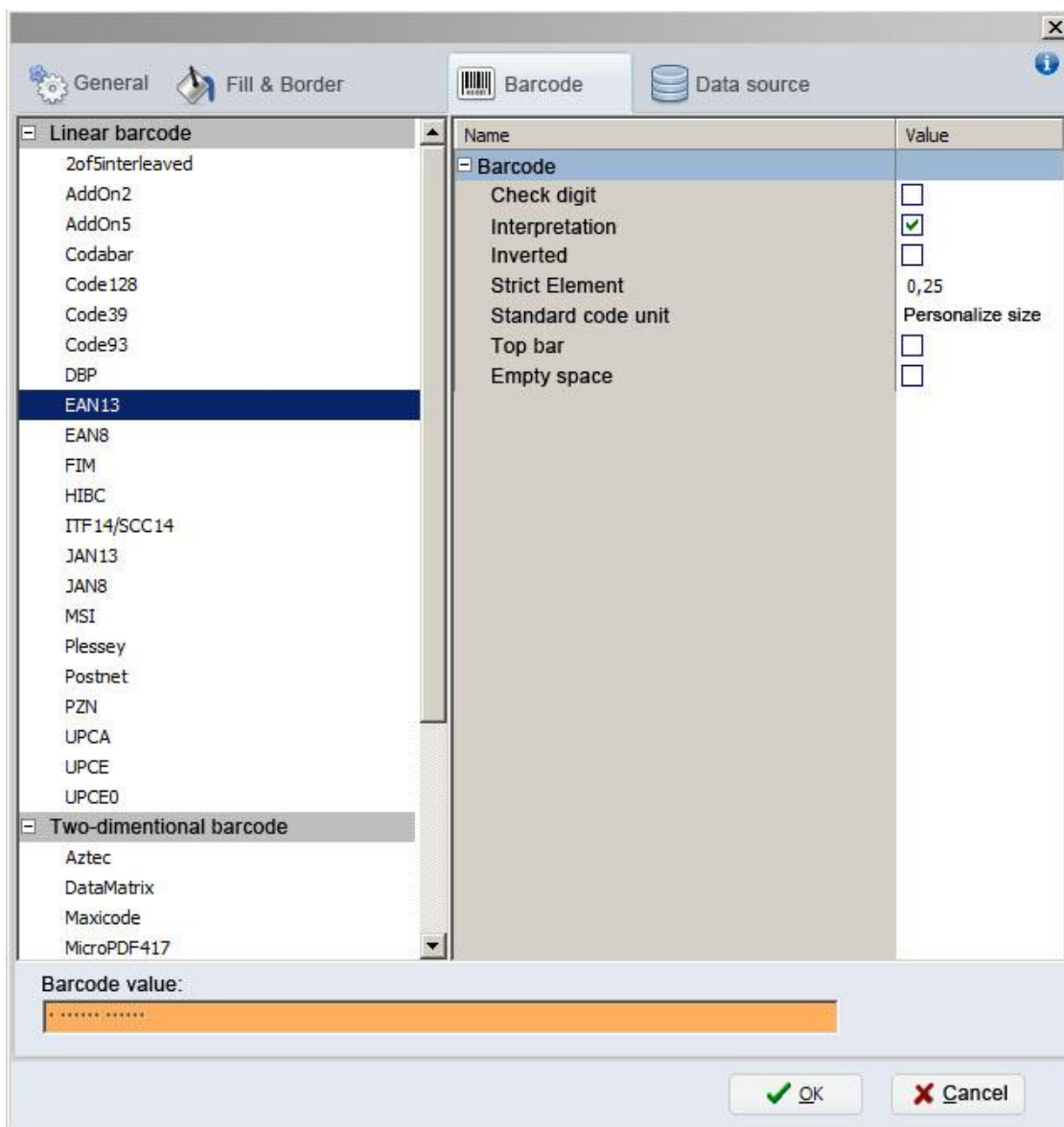
Click on the “OK” button to confirm

The tool “Barcode” is used for inserting barcodes





After selecting the tool “Barcode”, click onto the center of the label, and the following window will open:



From this window, it is possible to set the size of the barcode, size of numbers, style, and type of code (EAN13, UPC, CODE39, etc.)

The tool "Image" is used to insert an image onto the label



**N.B.** For a higher quality print, we advise to insert black and white images. In the case that you want to insert color or greyscale images, the result in the print phase will not be of good quality. In the print phase, there is an area for regulating the image quality of color or greyscale images.

The following highlighted tools are used to insert lines, rows, squares, rectangles, circles and ellipses.



TO INSERT THE WASH SYMBOLS ON THE LABEL,

FOR EXAMPLE: 

YOU MUST INSERT A TEXT BOX SELECTING THE TYPE OF FONT, E.G.:

TEXLABEL-ISO

THIS REFERS TO THE "CHARACTER MAP TEXLABEL – ISO" FOR THE FOLLOWING TABLE (EVERY SYMBOL CORRESPONDES TO A CHARACTER).

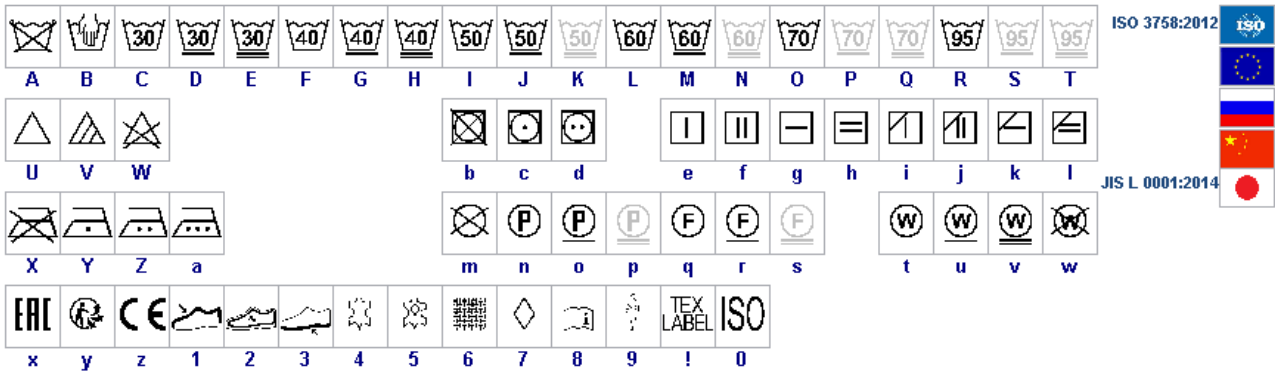
## TEXLABEL - ISO

																				ISO 3758:2012					
A	B	C	D	E	F	G	H	I	J	K	L	M	N	O	P	Q	R	S	T						
																				JIS L 0001:2014					
U	V	W						b	c	d		e	f	g	h	i	j	k	l						
X	Y	Z	a					m	n	o	p	q	r	s		t	u	v	w						
x	y	z	1	2	3	4	5	6	7	8	9	!	0												

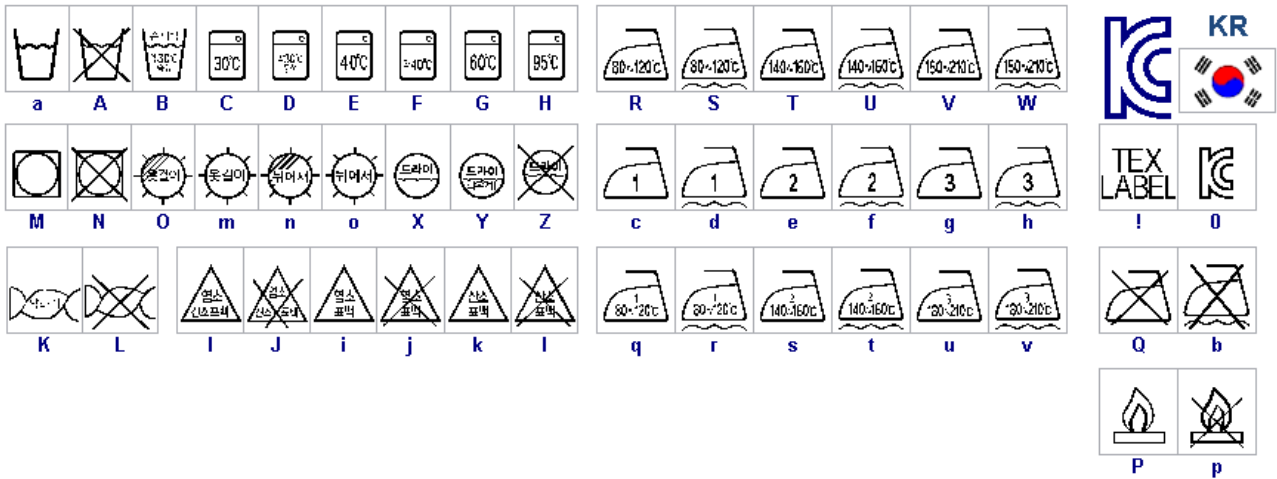
TEXLABEL fonts can also be purchased at a later time by contacting TEXLABEL.

Separately purchased **TEXTLABEL** fonts:

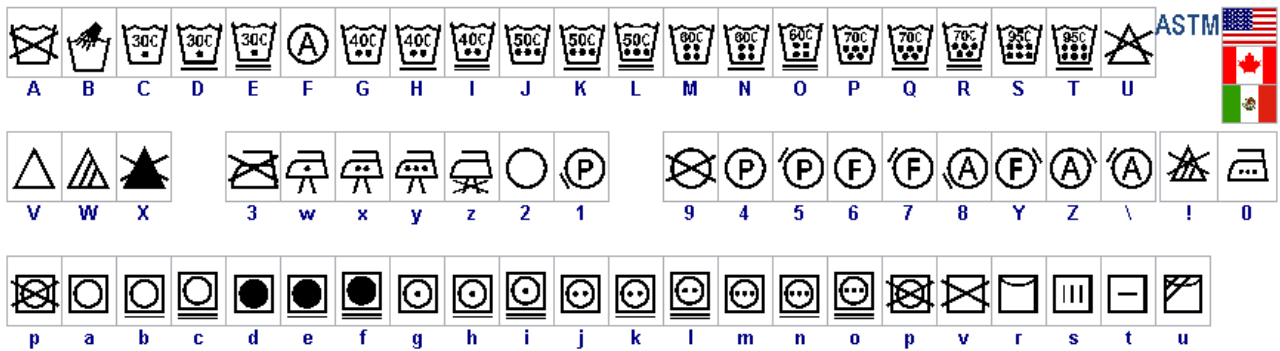
## TEXTLABEL - ISO



## TEXTLABEL – KR



## TEXTLABEL – ASTM



# MAINTENANCE

## WARNING!!!

**PROCEED WITH THE PROCESS WITH THE AC CORD DISCONNECTED FROM THE PRINTER**

In order to always ensure optimum printing and maximum durability of the mechanical components and print head, it is essential to clean the printer and print head at each ribbon change.

### • PRINTHEADS

Wait about 1 minute after the last print, in order to let the printheads cool down. Using a dampened alcohol cloth, wipe the printheads, rub the areas indicated by the arrows in the image, until it completely removes the print residues.

During print, impurities may accumulate on the printhead, which could compromise the quality of print. Some examples like difference in contrast or vertical stripes may appear.

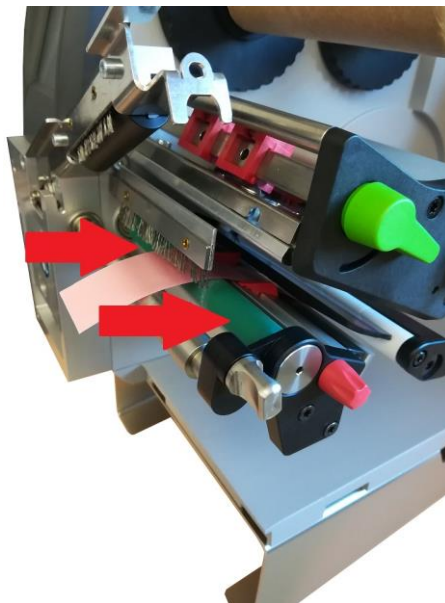
**WARNING: TO CLEAN THE PRINTHEAD, DO NOT USE SHARP OR POINTED OBJECTS. DO NOT TOUCH THE PROTECTIVE GLASS OF THE PRINTHEAD.**

Cleaning procedure:

1. Move the printhead
2. Remove the foil and ribbon from the printer
3. Clean the printhead with a dampened alcohol cloth
4. Let the printhead dry for 2 – 3 minutes

### • PLATEN

Rotate the platens (shown in the figure) and clean them with a cloth that does not release impurities, dampened with alcohol, until the complete removal of the dirt accumulated.



## CLEAR ERROR MESSAGES

### OUT OF PAPER:

Out of label roll → Load labels

Error in the paper feed → Check media feed

### OUT OF RIBBON:

Out of ink foil → Insert new ink foil where needed

Ink foil broken during printing at high temperature → Cancel current print job  
Change heat level of printhead  
Clean the printhead (see page 20)  
Re-insert the foil  
Restart print job

### HEAD OPEN:

Printhead not locked → Lock printhead

### HEAD TOO HOT:

Printhead is overheated → Reduce the heat level of the printhead. Wait for printhead to cool off.  
Print job will be continued automatically.

### PRINTER IS NOT PRINTING:

If once given the command to print, the printer doesn't execute the command and the display shows "The printer is receiving data" (See symbol table below), press the "Feed" button to start printing.














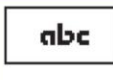

### CUTTER BLOCKED:

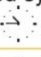






Press the "Cancel" button, switch printer off, remove any material in case it got jammed, and switch printer back on.

If any of these problems persist, contact **TEXLABEL** technical support.

## SYMBOLS

Depending on the printer configuration, in the row state of the display, the following symbols may appear. These symbols allow to rapidly check the printer state.

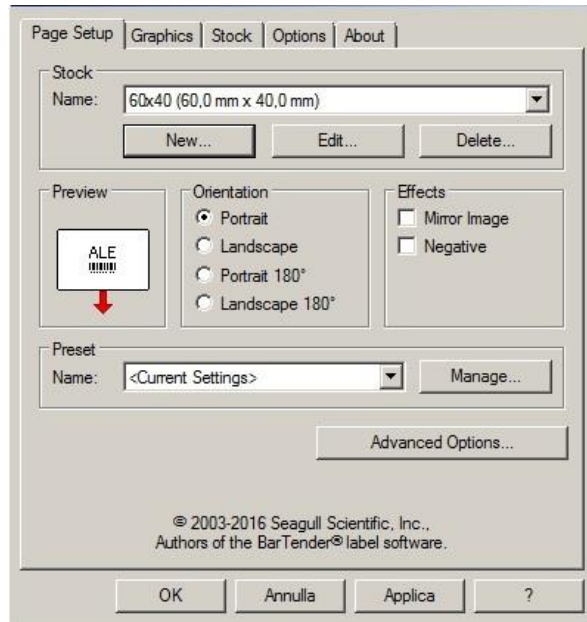
Symbol	Description	Symbol	Description	Symbol	Description
	Clock		Ethernet link status		User memory in the clock circuit
	Date sheet		Temperature of the printhead		Used memory
	Date/time digital		PPP funds		Input buffer
	Ribbon supply		Debug window for abc programs		Access to memory card
	Wi-Fi signal strength		Control of the lower display line is handed over to an abc program		Printer is receiving data

State	Display	Description
<b>Ready</b>	Ready and configured symbol displays, such as time  and date 	The printer is in the ready state and can receive data.
<b>Printing label</b>	Printing label and the number of the printed label in the print job.	The printer is currently processing an active print job. Data can be transmitted for a new print job. The new print job will start when the previous one has finished.
<b>Pause</b>	Pause and the symbol 	The printing process has been interrupted by the operator. The print process may be continued by pressing the <b>pause</b> key.  The printing process has been interrupted automatically by passing a pre-defined rest diameter of the ribbon supply roll. After loading a new ribbon roll the print process may be continued by pressing the <b>pause</b> key.
<b>Correctable error</b>	 and the type of error and the number of labels still to be printed.	An error has occurred that can be rectified by the operator without interrupting the print job. The print job can be continued after the error has been rectified.
<b>Irrecoverable error</b>	 and the type of error and the number of labels still to be printed.	An error has occurred that cannot be rectified without interrupting the print job.
<b>Critical error</b>	 and the type of error	An error occurs during the system test. ▶ Switch the printer off and then on again at the power switch or ▶ Press <b>cancel</b> key. Call Service if the fault occurs persistently.
<b>Power Save Mode</b>	 and the key lighting is switched off	If the printer is not used for a lengthy period, it automatically switches to power save mode. ▶ To exit power save mode: Press any key on the navigator pad.

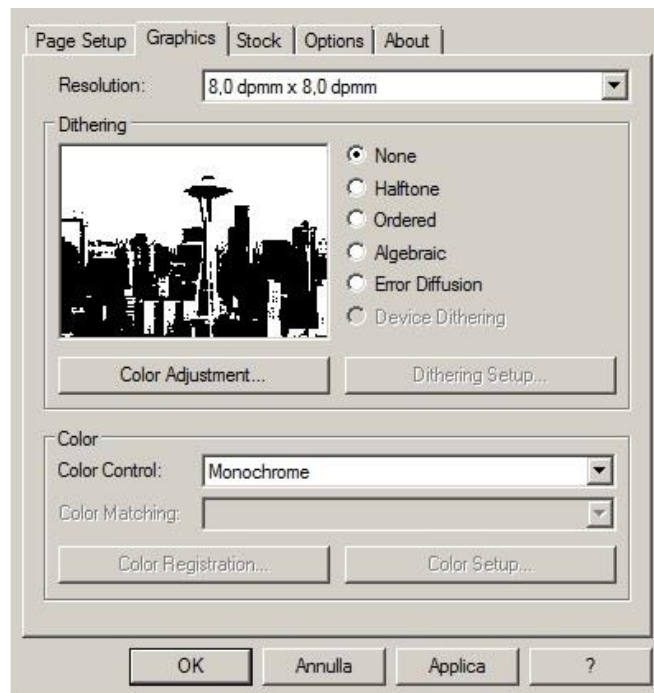
## PARAMETERS FOR WHITE AND COLORED STICKERS

After clicking on "Document Properties", a window opens where you need to set the size of the adhesive labels in the "Page Setup" tab in the area called "Stock". If the labels format has already been created, it will be enough to select them from the drop-down menu. Otherwise, you need to click on the button "New" and enter the size of the format you want to create.

Set the print orientation by selecting Portrait.

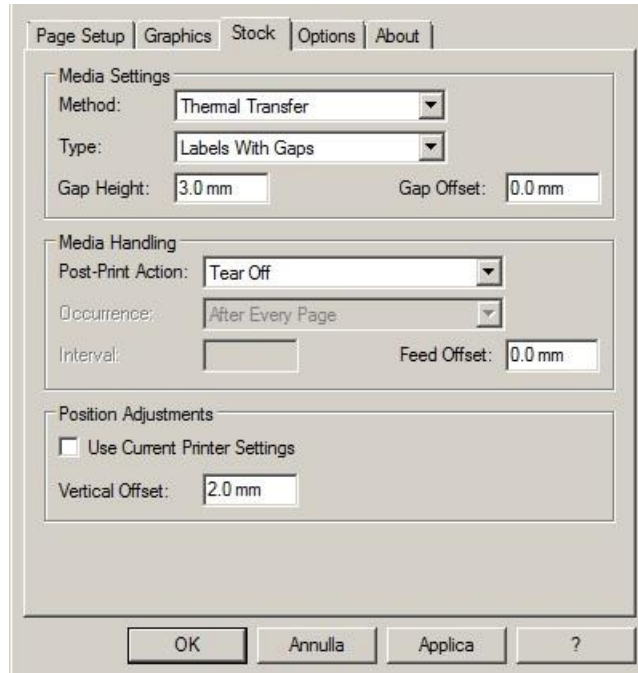


By selecting the "Graphics" tab you can set the dithering. For sticker labels select "None".

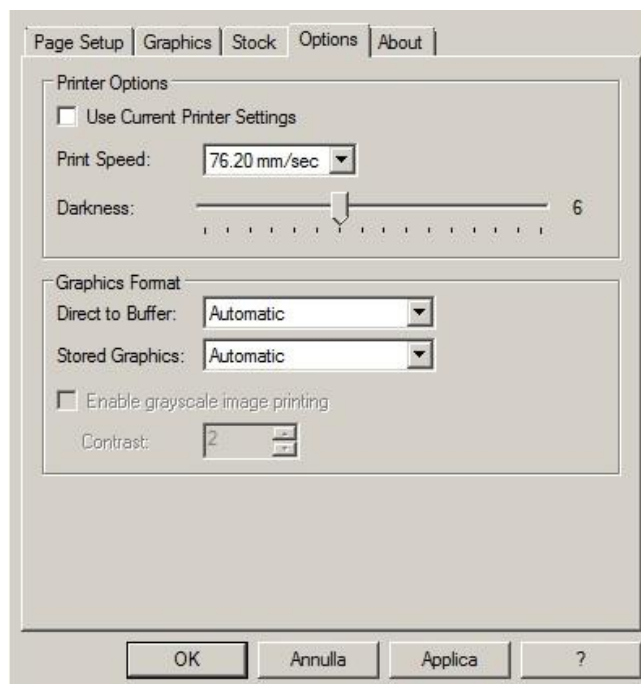




In the figure the "Stock" tab is selected. Here for adhesive labels you have to set it as a "thermal transfer" print method and as media type "Labels With Gaps", the "Gap Height" must remain set to 3.0 mm.



Select the "Options" tab and set the print speed, which is recommended for adhesive labels at 76.20 mm/sec. The intensity of the black level set to 6.



We do not recommend using the default "Use Printer Current Setting" parameters, but always indicate METHOD: THERMAL TRANSFER (CONTINUOUS TYPE / LABEL WITH SPACE / LABEL WITH SIGNALS, ACTION AFTER PRINTING NONE / CUT / TEAR OFF).

After printing, if the label does not align exactly at the tear point, you can adjust the parameter

Feed Offset: 0.0 mm by adding or removing ("-" minus sign) 1mm or more millimeters.

## PARAMETERS FOR TRANSPARENT STICKERS

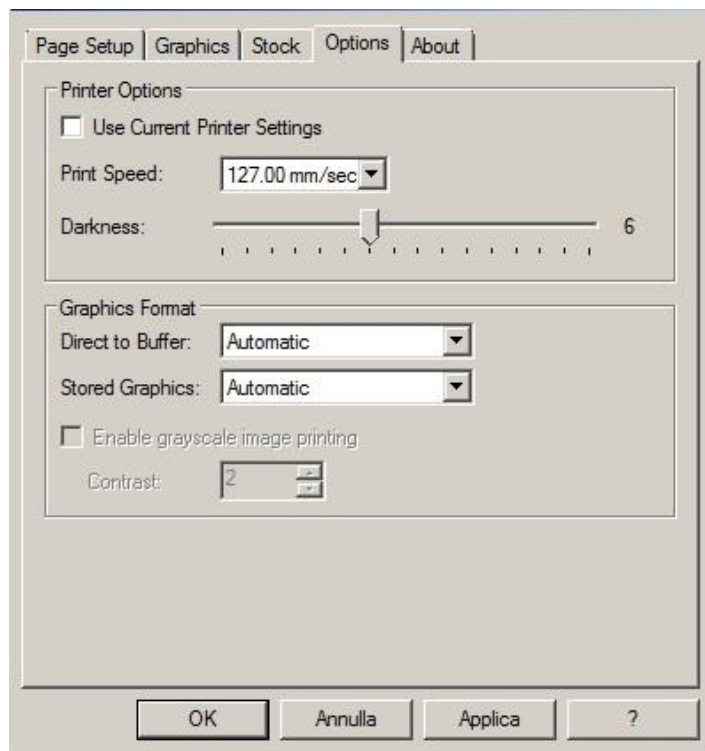
For transparent stickers, the parameters set in "Page Setup" and "Graphics" are the same as white or colored stickers.

In the "Stock" tab settings, set the parameters to the settings as shown below.

The image shows a dialog box with the following settings:

- Page Setup | Graphics | Stock | Options | About**
- Media Settings**
  - Method: Thermal Transfer
  - Type: Labels With Marks
  - Mark Height: 3.0 mm
  - Mark Offset: 0.0 mm
- Media Handling**
  - Post-Print Action: None
  - Occurrence: [Dropdown]
  - Interval: [Spinner]
  - Feed Offset: 0.0 mm
- Position Adjustments**
  - Use Current Printer Settings
  - Vertical Offset: 2.0 mm
- Buttons: OK, Annulla, Applica, ?

In the "Options" tab settings, set the parameters to the settings as shown below.



After printing, if the label does not align exactly at the tear point, you can adjust the parameter

Feed Offset: 0.0 mm by adding or removing ("-" minus sign) 1mm or more millimeters.

WARNING: We do not recommend using the default "Use Printer Current Setting" parameters, but always indicate METHOD: THERMAL TRANSFER, CONTINUOUS TYPE / LABEL WITH SPACE / LABEL WITH SIGNALS, ACTION AFTER PRINTING NONE / CUT / TEAR OFF.

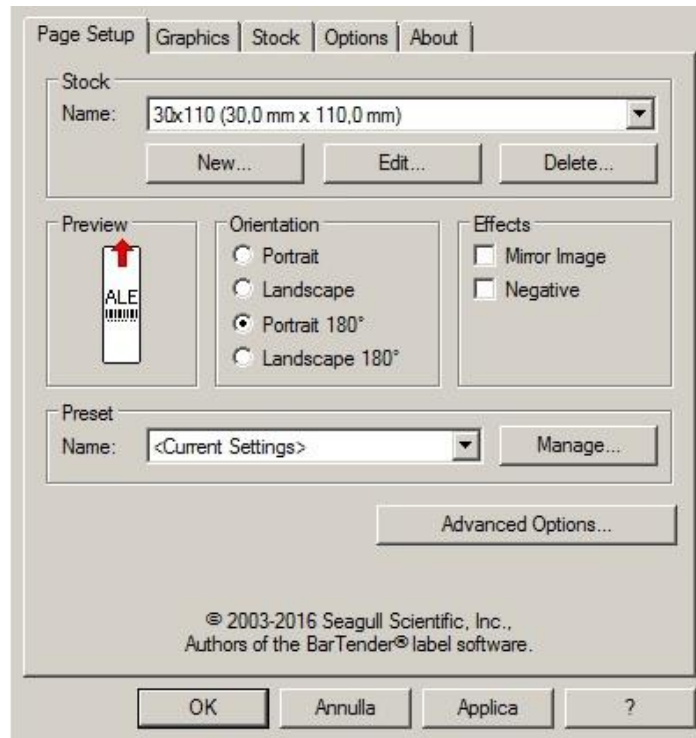
## PARAMETERS FOR COMPOSITION LABELS

# WWW.TEXLABEL.EU

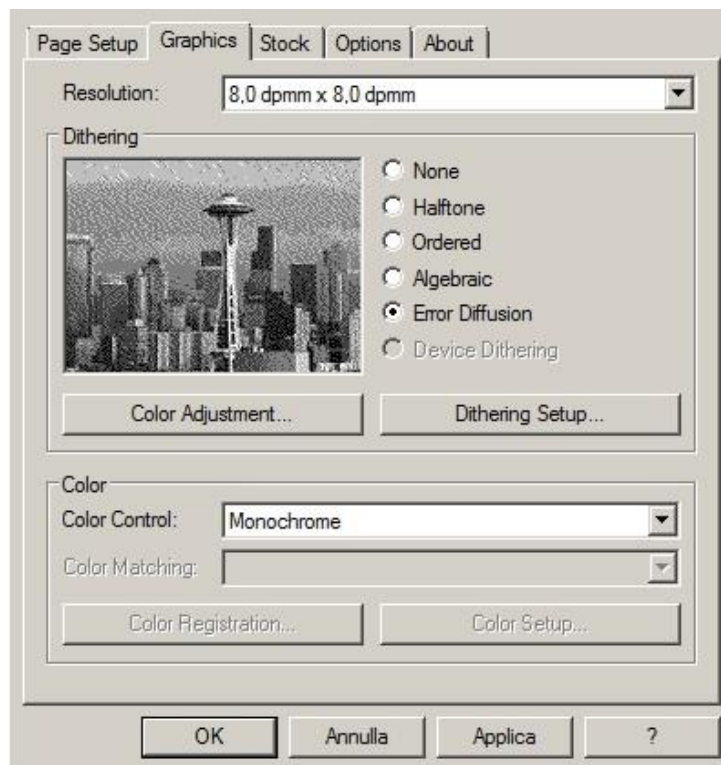


**WARNING:** We do not recommend using the default "Use Printer Current Setting" parameters, but always indicate METHOD: THERMAL TRANSFER (CONTINUOUS TYPE / LABEL WITH SPACE / LABEL WITH SIGNALS, ACTION AFTER PRINTING NONE / CUT / TEAR OFF).

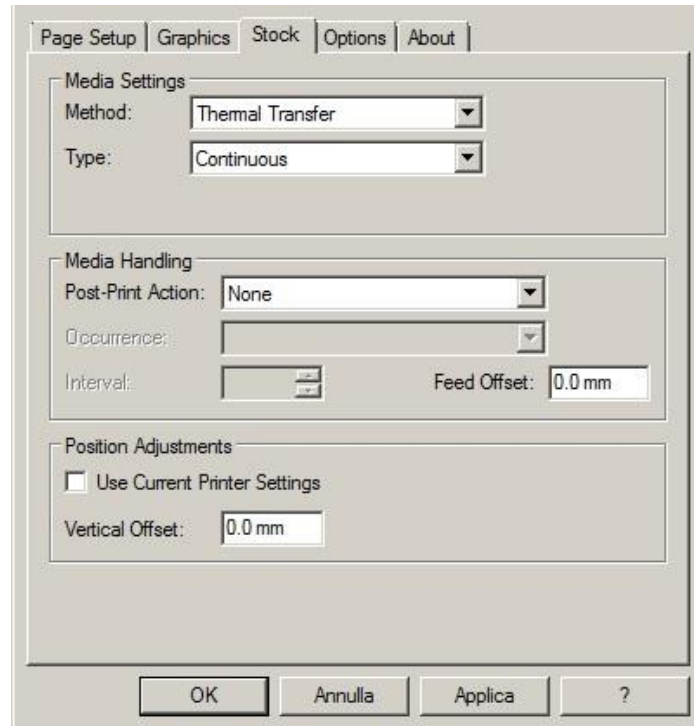
We recommend that you leave the first 12-15 millimeters of the top of the label blank (not printed), which is the space needed to sew the label into the garment.  
We also recommend setting the "Orientation" parameter to "Portrait 180°" so that the label is pulled out of the printer with the unprinted part.



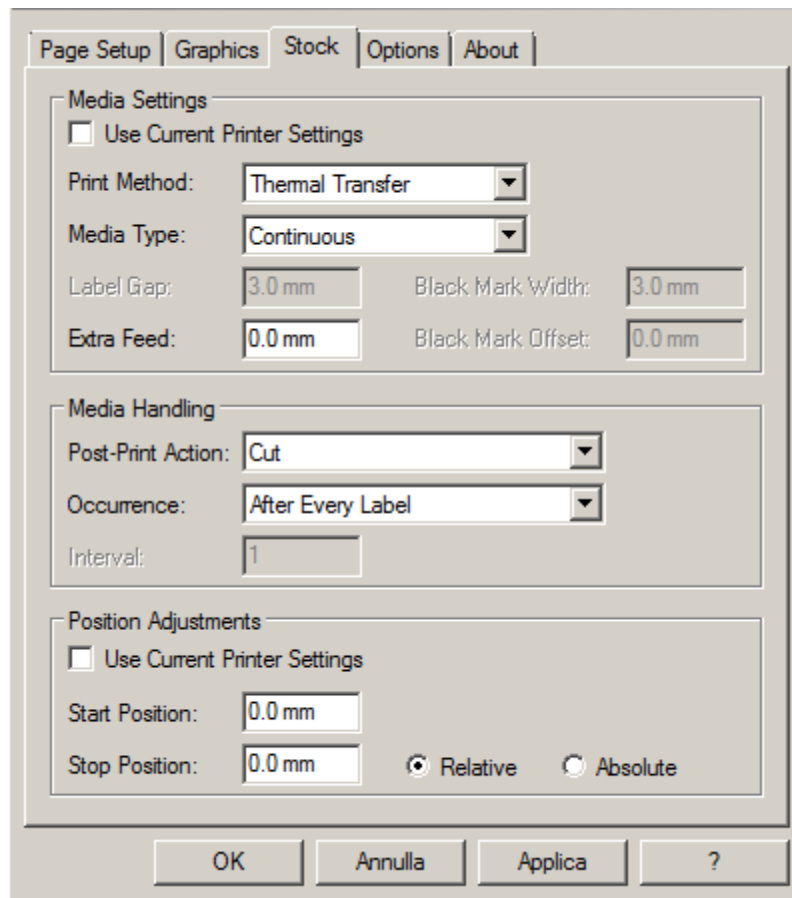
For care labels it is advisable to set Dithering to "Error Diffusion".



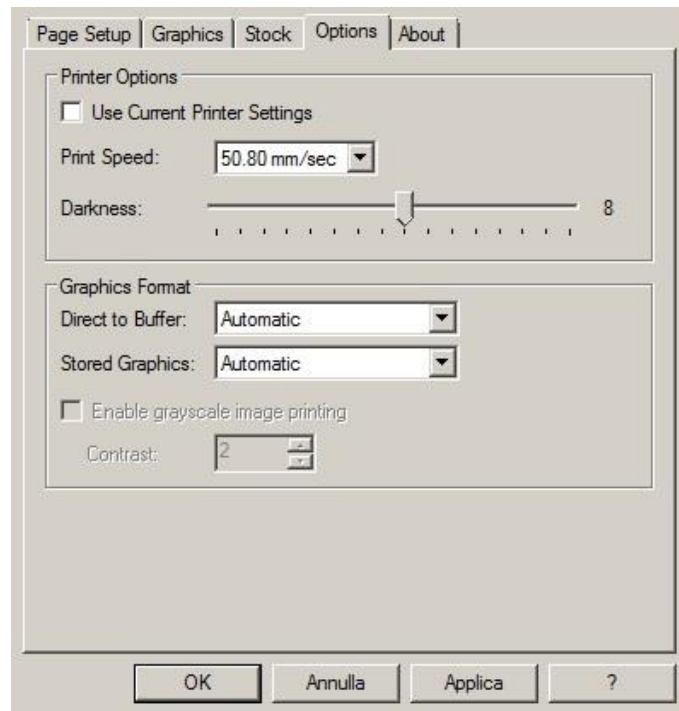
In the "Stock" tab, set "Thermal transfer" as the printing method and "Type" set to "Continuous", and select "None" for the "Post-Print Action" drop down menu.



If the cutter is installed on the printer, set the parameters in the "stock" tab as follows:



For care labels, we recommend setting the print speed in the "Options" tab to 50.80 mm/sec, while the value to be set for black level strength varies depending on the material used as a print media. In the last page, there is an example showing the intensity values to be set according to the material to be printed on.



In general, the higher the Print Speed, lower is the print quality.

Intensity is the temperature at which the print head thermally transfers the ink (also called Ribbon, foil, film) to the print ribbon. The higher the intensity, the more marked the printing is.

All materials are available at TEXTLABEL. From wax, wax/resin to resin. Ribbons with a wide range of sizes and colors according to your needs, ready for delivery and without minimum order.

N. B. Too much intensity leads to 3 unpleasant effects: ink can deburr, the label can stick to the ribbon instead of leaking out of the printer, and the print head wears out faster.

The less the intensity, the more faded the writing is.

The right intensity must be found according to the result you want to obtain (large, small inscriptions, drawings, logos, geometric shapes, etc.).

We recommend that you try to print with low intensity and then increase it until you get a satisfactory result (label printed with good sharpness have no smearing or sticking problems)

In this page <http://www.texlabel.eu/wp/ribbons-labels-en/> there are four types of ribbons (Satin Ribbons, Polyester Ribbons, Nylon/Polyamide Ribbons, Polyurethane Ribbons). In each section you can see some examples of composition labels printed by us, and at the bottom of each label you can read the code of the ribbon.

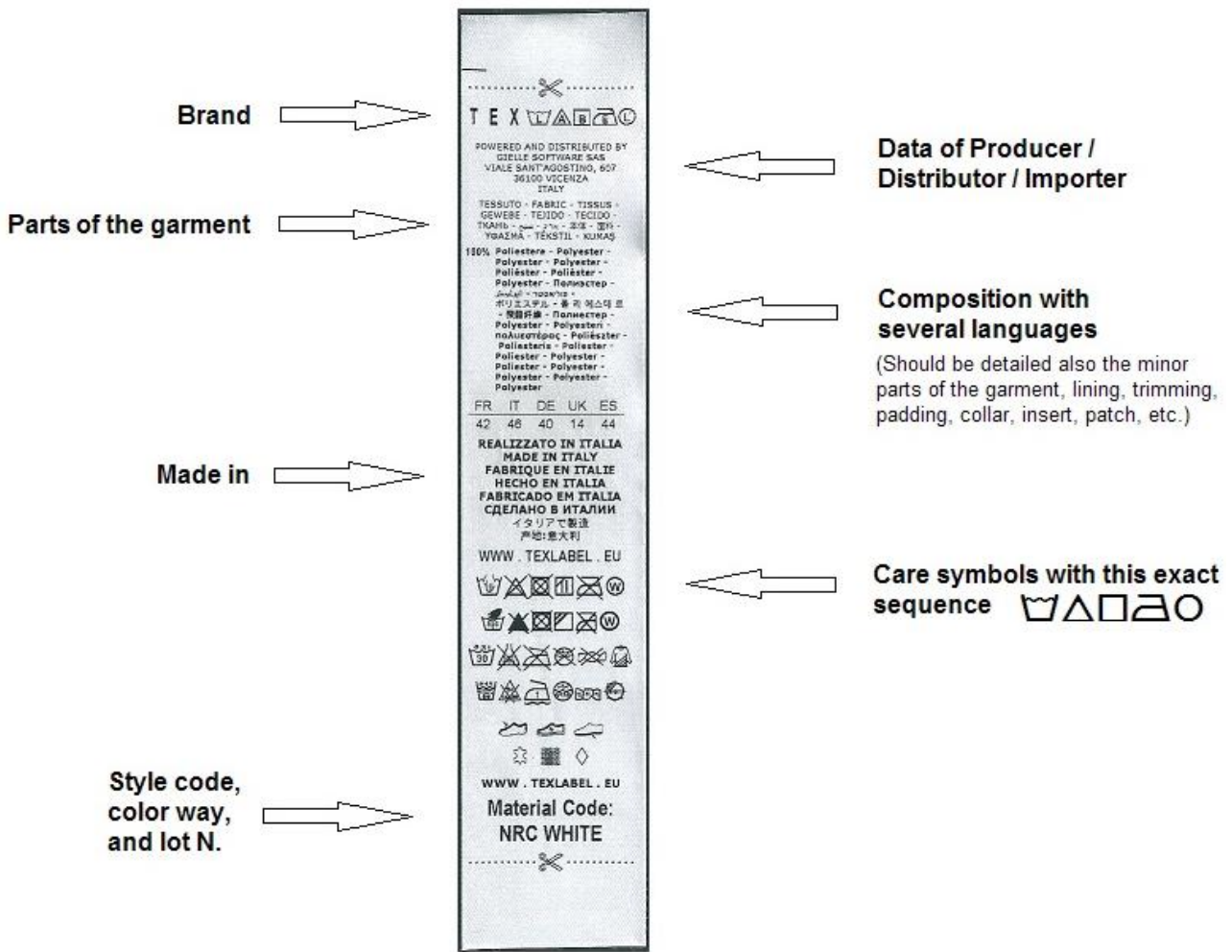
Contact **TEXTLABEL** for **FULL SAMPLE BROCHURE**.







# PRINCIPAL REQUIREMENTS FOR INTERNATIONAL CARE LABELS



For any further information or assistance, please contact the support service of **TEXLABEL**

[www.texlabel.eu](http://www.texlabel.eu)

[info@texlabel.eu](mailto:info@texlabel.eu)